

# PPG Commercial Spaces Interactive Brochure

Coatings & Color Solutions for  
Commercial Applications



*THE TRUSTED PARTNER OF THE PRO PAINTER™*





# Why PPG

## A Leader in Innovation

PPG is recognized and respected around the world as a global coatings leader, providing technologically advanced solutions to meet even the most difficult coatings challenges. From developing a revolutionary coating process for the automotive industry, to providing durable and lightweight protective aircraft coatings, to coloring electronic equipment and consumer goods, to safely lining food packaging.

### Manufacturing Excellence

We leverage innovation and technology from across our global businesses to help our customers achieve successful outcomes.

We have exterior products that utilize a UV-protection coating from our automotive coatings to help color last, and other products that leverage rust-resistant technology from marine coatings for a lasting finish.

We also share technology developed to endure a 100-mph hockey puck to make some of our residential paints durable.

Our relentless commitment to the sharing of technological advancements and operational best practices enables us to deliver an industry-leading product and service portfolio. And because we focus on painting professionals, we can provide the service, expertise, and product solutions to turn your toughest challenges into simpler tasks.

### Why Partner with PPG?

- On-site consultations with problem area identification and tailored product solutions
- Development of specifications that meet performance and budget requirements
- Standardized solutions that drive efficiency
- Delivery to keep you on schedule, at no cost to you
- Dedicated, knowledgeable sales specialist
- Order paint anytime, anywhere – 24/7
- Streamlined project management and paint services via PPG Services

### PPG is a Global Maker of Paints, Coatings and Specialty Materials



Headquartered in Pittsburgh, PA



Founded in 1883



Operations in 70+ Countries



Awarded a Gold rating in corporate social responsibility from ECOVADIS®



30+ R&D® 100 Awards, known as the “Oscars of Innovation”

## Coatings Solutions



### Architectural Coatings

Products and services developed for all our customers' needs and built to perform for the job at hand. Formulated with technology and innovation from a wide range of categories including aerospace and marine.



### Industrial Coatings

Leading manufacturers trust PPG's global color stylists, chemists and technical application experts to provide the innovative coatings that enhance the products we use every day.



### Protective & Marine Coatings

Developing products that protect customers' assets in some of the world's most demanding conditions and environments, including civil infrastructure, offshore, petrochemical, power, marine new-build, marine dry dock and marine sea stock.



### Traffic Solutions

The broad, global portfolio of pavement markings and traffic safety solutions includes paint, thermoplastics and other advanced traffic technologies, which help keep motorists, cyclists, road workers and pedestrians safe in our communities.



# Color Tools & Services

## The Power of Color: Trend Forecasting and Research

PPG's unique position as a global color leader in multiple industries enables us to observe and translate emerging global color trends for our customers' applications in the consumer goods, industrial, automotive, aerospace, residential and commercial architectural industries. We help our customers generate and filter color ideas based on cultural, demographic and societal trends. This uncommon approach to color forecasting gives our customers an edge for all of their projects

### Professional Color Tools

PPG understands that color has the ability to transform a space and the breadth to articulate your design vision. Let PPG's global color research and professional tools inform and inspire you to make color selection easier.

#### Palette at a Glance

- Featuring all 2,000+ colors organized by color family in an easy-to-carry, spiralbound book.

#### Core Fan Deck

- Featuring all 2,000+ colors, including beautiful neutrals and our Harmony color collection.

#### Portable Designer Kit

- Sample all 2,000+ colors through 4" x 4" samples housed in a sleek and easy-to-tote, soft carrying case.

#### PPG Paints Portable Color Matching Tool

- Match wall colors, carpet, tile, fabrics, wallpaper and more to the closest PPG paint color with this small portable device. Ideal for professional painters, interior designers and facility managers.



### Color Swatch Services to Meet Your Needs

- Have complimentary, large 8" x 8" or 4" x 4" color swatches mailed directly to you or your customers. Order your swatches here: [ppgpaints.com/order-swatch](http://ppgpaints.com/order-swatch)
- Order large, 12" x 12" non-damaging, peel and stick color swatches made with real PPG paint. Order your swatches here: [ppgpaints.com/samplize](http://ppgpaints.com/samplize)



### Color Library Architect Binder Set

- A set of 7 binders featuring 8" x 8" swatches of all 2,000+ colors.
- Order paint color swatches, fan decks and paint design tools from [PPG Paints](http://PPG Paints). Whether you're an architect, interior designer, or other design professional, PPG has resources to help you design better and faster. Select the colors and resources you would like to receive, and your Swatchbox will be delivered to you for free within 2 business days.

## Professional Color Services

### PPG Color Services

Today, customers are seeking ways to customize their spaces. Our Color & Design Team can provide color research, reports and personal color assistance for any need:

- Professional photo renderings featuring color scheme options at no cost to you
- Custom color cards and boards
- Custom accent wall programs
- Personalized color scheme recommendations, including:
  - Interior
  - Exterior
  - Single or multiple unit
  - Geographic color sensitivities
  - Generational color sensitivities

### Previews®

[Our interactive Previews portal](#) allows customers to apply and view true and accurate color representation of your project before actually painting. Color can be applied, changed, saved in real time and then generated into a PDF for future viewing.

### Generational Color Palettes

Different color palettes resonate with different generations and can reflect an era. [PPG has curated three color stories per generation](#) to inspire designers, architects and specifiers when creating new spaces for different life stages and lifestyles.

### Contact an Architect & Design Representative

[Connect with your local rep](#) for individual project support, specifications, product consultation, color assistance and more.



Before

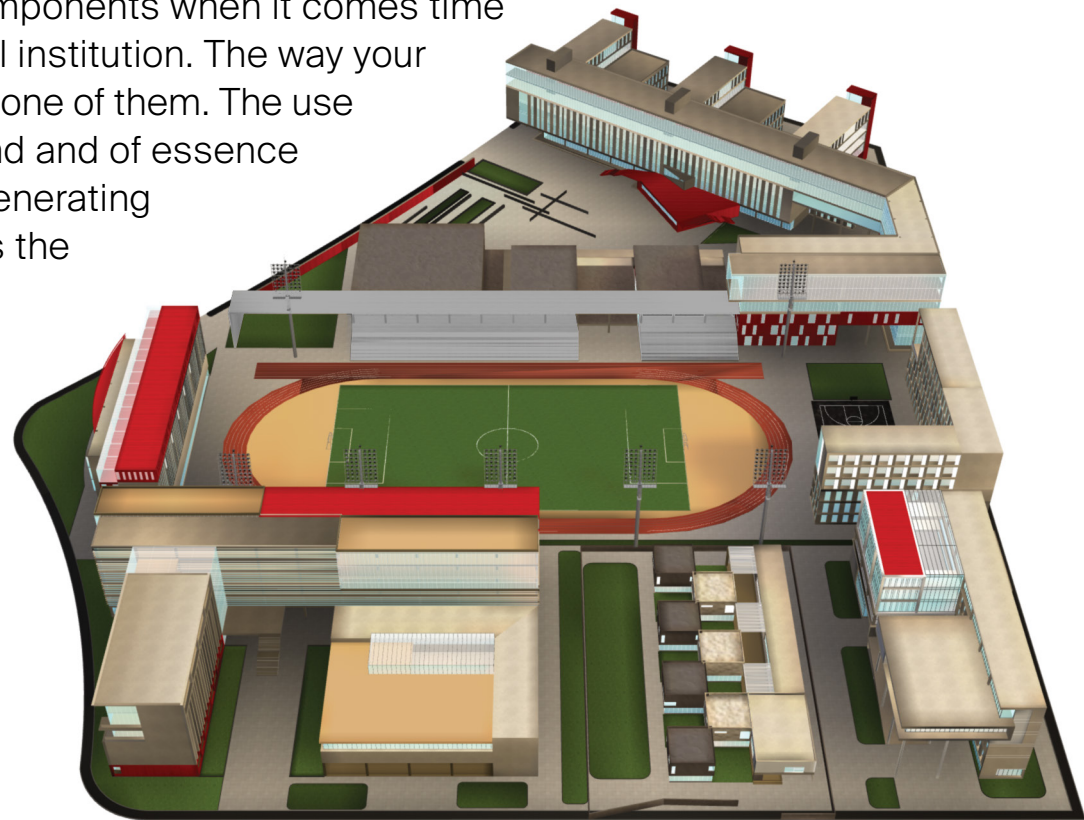


After



# Education

Students require many components when it comes time to selecting an educational institution. The way your campus looks and feels is one of them. The use of the right colors – on trend and of essence – is a key component of generating an atmosphere that makes the commitment worthy.



## Top 5 PPG Interior Colors - Education

<b>CRAB BISQUE</b> PPG1195-4
<b>BUTTER COOKIE</b> PPG1108-3
<b>GUACAMOLE</b> PPG1121-5
<b>COPENHAGEN</b> PPG1137-4
<b>GOLDEN FLEECE</b> PPG1214-2

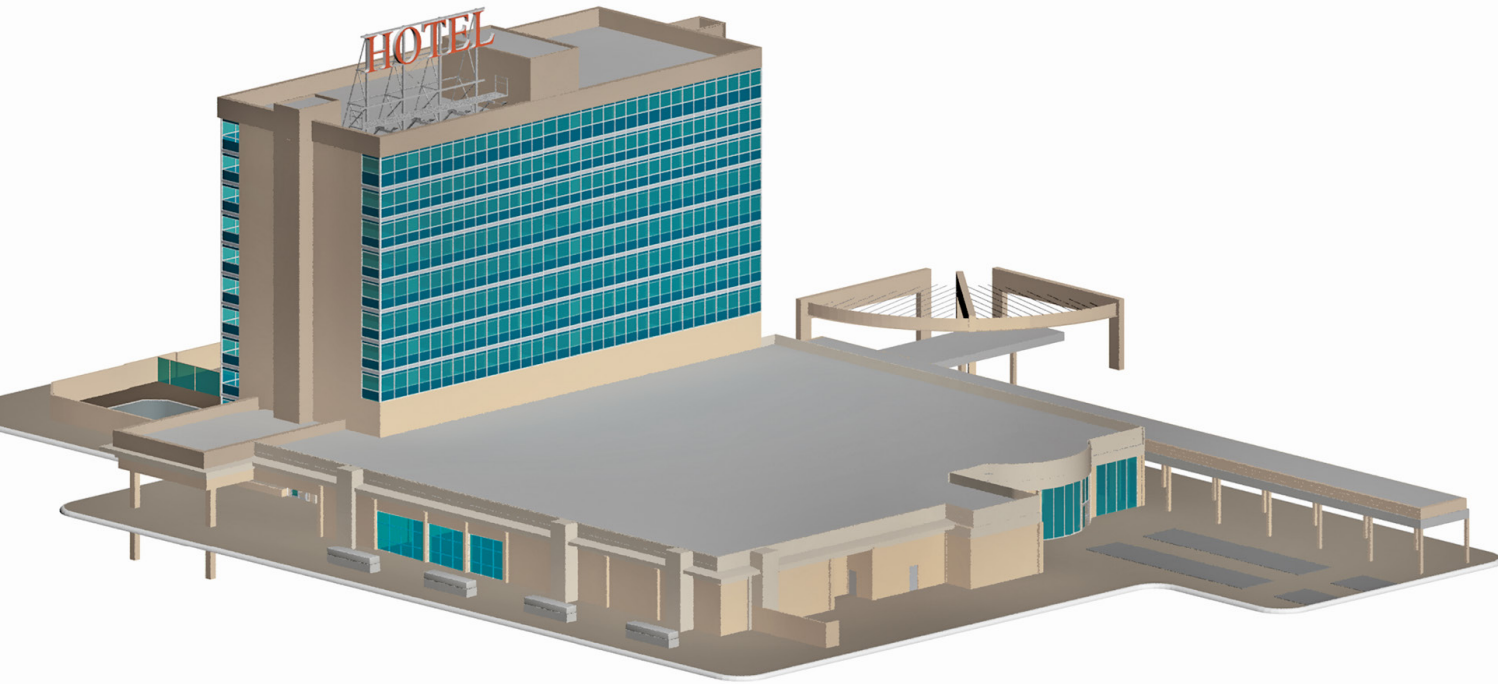


Application		Featured Products		
		Primer	Intermediate Coat	Topcoat
<b>A</b>	Classroom/Office Drywall	SPEEDHIDE® Zero Interior Latex Sealer	SPEEDHIDE® Zero Interior Latex	
<b>B</b>	Bathrooms Drywall	SEAL GRIP® Interior/Exterior Universal Primer/Sealer	PITT-GLAZE® WB1 Interior Pre-Catalyzed Water-Borne Acrylic Epoxy <b>OR</b> AQUAPON® WB EP Epoxy	
<b>C</b>	Block Walls	SPEEDHIDE® Interior/Exterior Masonry Latex Block Filler	SPEEDHIDE® Zero Interior Latex <b>OR</b> PITT-GLAZE® WB1 Interior Pre-Catalyzed Water-Borne Acrylic Epoxy	
<b>D</b>	Trim /Doors /Door Frames	SEAL GRIP® Interior/Exterior Universal Primer/Sealer	BREAK-THROUGH!® 50 Interior/Exterior WB Acrylic <b>OR</b> PITT-GLAZE® WB1 Interior Pre-Catalyzed Water-Borne Acrylic Epoxy	
<b>E</b>	Concrete Floor	Light Duty	BREAK-THROUGH!® 50 Interior/Exterior WB Acrylic	
		Moderate Duty	AQUAPON® WB EP Epoxy	
		Heavy Industrial Vehicular Duty	PPG Flooring FLR 900	PPG Flooring FLR 600
<b>F</b>	Exterior Block Walls	SPEEDHIDE® Interior/Exterior Masonry Latex Block Filler	PPG PERMANIZER® Exterior Acrylic Latex	
<b>G</b>	Exterior Steel	PITT-TECH® PLUS 4020 PF	PITT-TECH® PLUS Interior/Exterior DTM Industrial Enamel <b>OR</b> BREAK-THROUGH!® 50 Interior/Exterior WB Acrylic	
<b>H</b>	Exterior Aluminum	PITT-TECH® PLUS 4020 PF	PITT-TECH® PLUS Interior/Exterior DTM Industrial Enamel	
<b>I</b>	Exterior Wood Siding & Trim	SEAL GRIP® Interior/Exterior Universal Primer/Sealer	PPG PERMANIZER® Exterior Acrylic Latex <b>OR</b> SUN PROOF® Exterior Latex	
<b>J</b>	Exterior EFIS	SEAL GRIP® Interior/Exterior Universal Primer/Sealer	SPEEDHIDE® Exterior Latex <b>OR</b> ACRI-SHIELD® MAX Exterior Latex	



# Hospitality

Today, customers talk as much about the hotels they stayed in as the city and the sites they visited. Hotels have become the runway for interior designers as comfort is enhanced with design and color to delight and engage their customers.



## Top 5 PPG Interior Colors - Hospitality

**IN THE CLOUD**  
PPG0999-1

**DELICATE WHITE**  
PPG1001-1

**STORM'S COMING**  
PPG1008-2

**SHARK**  
PPG1006-2

**SILENT SMOKE**  
PPG1025-2

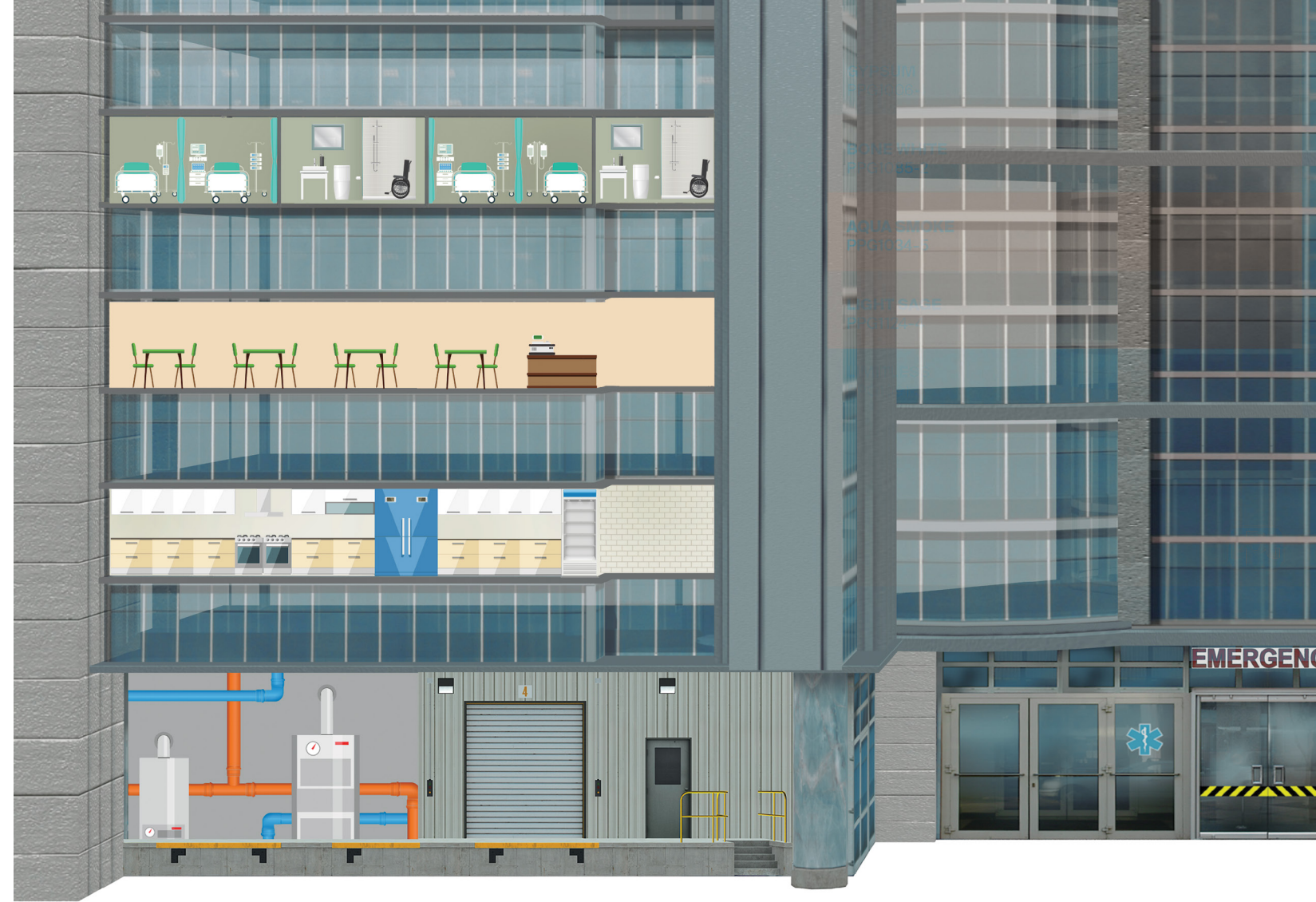
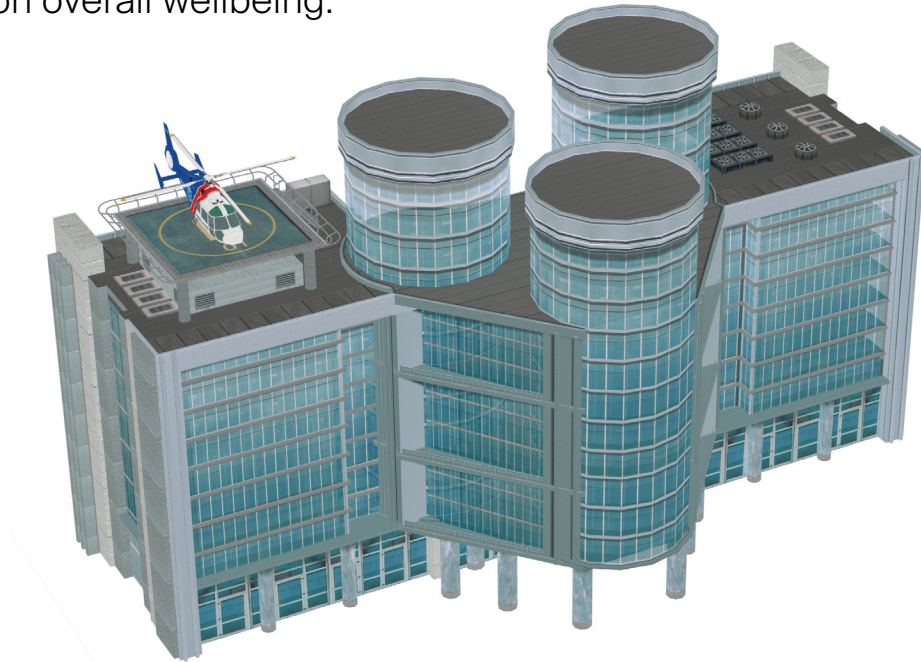


Application		Featured Products			
		Primer	Intermediate Coat	Topcoat	
<b>A</b>	Drywall	SPEEDHIDE® Zero Interior Latex Sealer	SPEEDHIDE® Zero Interior Latex		
<b>B</b>	Bathrooms Drywall	SEAL GRIP® Interior/Exterior Universal Primer/Sealer	PITT-GLAZE® WB1 Interior Pre-Catalyzed Water-Borne Acrylic Epoxy <b>OR</b> AQUAPON® WB EP Epoxy		
<b>C</b>	Block Walls	SPEEDHIDE® Interior/Exterior Masonry Latex Block Filler	SPEEDHIDE® Zero Interior Latex <b>OR</b> PITT-GLAZE® WB1 Interior Pre-Catalyzed Water-Borne Acrylic Epoxy		
<b>D</b>	Trim /Doors /Door Frames	SEAL GRIP® Interior/Exterior Universal Primer/Sealer	SPEEDHIDE® Zero Interior Latex <b>OR</b> BREAK-THROUGH!® 50 Interior/Exterior WB Acrylic <b>OR</b> PITT-GLAZE® WB1 Interior Pre-Catalyzed Water-Borne Acrylic Epoxy		
<b>E</b>	Concrete Floor	Light Duty	BREAK-THROUGH!® 50 Interior/Exterior WB Acrylic		
		Moderate Duty	AQUAPON® WB EP Primer	AQUAPON® WB EP Epoxy	
		Heavy Industrial Vehicular Duty	PPG Flooring FLR 900	PPG Flooring FLR 600	PPG Flooring FLR 400
<b>F</b>	Exterior Block Walls	SPEEDHIDE® Interior/Exterior Masonry Latex Block Filler	ACRI-SHIELD® MAX Exterior Latex <b>OR</b> PERMA-CRETE® Interior/Exterior High Build 100% Acrylic Topcoat <b>OR</b> PPG PERMANIZER® Exterior Acrylic Latex		
<b>G</b>	Exterior Steel	PITT-TECH® PLUS 4020 PF	PITT-TECH® PLUS Interior/Exterior DTM Industrial Enamel <b>OR</b> BREAK-THROUGH!® 50 Interior/Exterior WB Acrylic		
<b>H</b>	Exterior Aluminum	PITT-TECH® PLUS 4020 PF	PITT-TECH® PLUS Interior/Exterior DTM Industrial Enamel		
<b>I</b>	Exterior Wood Siding & Trim	SEAL GRIP® Interior/Exterior Universal Primer/Sealer <b>OR</b> ACRI-SHIELD® MAX Exterior Latex Bonding Primer	ACRI-SHIELD® MAX Exterior Latex		
<b>J</b>	Exterior EFIS	SEAL GRIP® Interior/Exterior Universal Primer/Sealer	SPEEDHIDE® Exterior Latex <b>OR</b> ACRI-SHIELD® MAX Exterior Latex		
<b>K</b>	Exterior Stucco	PERMA-CRETE® Interior/Exterior Alkali Resistant Primer	PERMA-CRETE® Interior/Exterior High Build 100% Acrylic Topcoat <b>OR</b> SUN PROOF® Exterior Latex <b>OR</b> SPEEDHIDE® Exterior Latex		



# Hospitals

Today, facilities are seeking ways to define their spaces to elevate the patient experience within the healthcare environment. There is an extensive use of color theory within healthcare facilities to create soothing, healing spaces for residents that focus on overall wellbeing.



## Top 5 PPG Interior Colors - Hospitals

<b>GYPSUM</b> PPG1006-1
<b>BONE WHITE</b> PPG1085-2
<b>AQUA SMOKE</b> PPG1034-5
<b>LIGHT SAGE</b> PPG1124-4
<b>LIMITLESS</b> PPG1091-3



Application		Featured Products		
		Primer	Intermediate Coat	Topcoat
<b>A</b>	Patient Room Drywall	SPEEDHIDE® Zero Interior Latex Sealer	SPEEDHIDE® Zero Interior Latex	
<b>B</b>	Patient Bathrooms Drywall	SEAL GRIP® Interior/Exterior Universal Primer/Sealer	PITT-GLAZE® WB1 Interior Pre-Catalyzed Water-Borne Acrylic Epoxy <b>OR</b> AQUAPON® WB EP Epoxy	
<b>C</b>	Block Walls	SPEEDHIDE® Interior/Exterior Masonry Latex Block Filler	SPEEDHIDE® Zero Interior Latex <b>OR</b> PITT-GLAZE® WB1 Interior Pre-Catalyzed Water-Borne Acrylic Epoxy	
<b>D</b>	Trim /Doors /Door Frames	SEAL GRIP® Interior/Exterior Universal Primer/Sealer	BREAK-THROUGH!® 50 Interior/Exterior WB Acrylic <b>OR</b> PITT-GLAZE® WB1 Interior Pre-Catalyzed Water-Borne Acrylic Epoxy	
<b>E</b>	Concrete Floor	Light Duty	BREAK-THROUGH!® 50 Interior/Exterior WB Acrylic	
		Moderate Duty	AQUAPON® WB EP Epoxy	
		Heavy Industrial Vehicular Duty	PPG Flooring FLR 900	PPG Flooring FLR 600
<b>F</b>	Exterior Block Walls	SPEEDHIDE® Interior/Exterior Masonry Latex Block Filler	PERMA-CRETE® Interior/Exterior High Build 100% Acrylic Topcoat <b>OR</b> PPG PERMANIZER® Exterior Acrylic Latex	
<b>G</b>	Exterior Steel	PITT-TECH® PLUS 4020 PF	PITT-TECH® PLUS Interior/Exterior DTM Industrial Enamel <b>OR</b> BREAK-THROUGH!® 50 Interior/Exterior WB Acrylic	
<b>H</b>	Exterior Aluminum	PITT-TECH® PLUS 4020 PF	PITT-TECH® PLUS Interior/Exterior DTM Industrial Enamel	
<b>I</b>	Exterior Wood Siding & Trim	SEAL GRIP® Interior/Exterior Universal Primer/Sealer	PPG PERMANIZER® Exterior Acrylic Latex <b>OR</b> SUN PROOF® Exterior Latex <b>OR</b> PPG ADVANTAGE™ 900 Interior/Exterior	
<b>J</b>	Exterior EFIS	SEAL GRIP® Interior/Exterior Universal Primer/Sealer	SPEEDHIDE® Exterior Latex <b>OR</b> ACRI-SHIELD® MAX Exterior Latex	



# Multi-Family

Today, residents are seeking ways to customize their spaces to bring a sense of individuality within the Multi-Family environment.



## Top 5 PPG Interior Colors - Multi-Family

**COTTON TAIL**  
PPG0998-1

**WILLOW SPRINGS**  
PPG1007-1

**FOG**  
PPG1010-2

**PACIFIC PEARL**  
PPG1011-1

**ELEMENTAL**  
PPG1011-2



Application		Featured Products		
		Primer	Intermediate Coat	Topcoat
<b>A</b>	Drywall	SPEEDHIDE® Interior Latex	SPEEDHIDE® Pro-EV Zero Interior Latex	
<b>B</b>	Bathrooms Drywall	SEAL GRIP® Interior/Exterior Universal Primer/Sealer	SPEEDHIDE® Pro-EV Zero Interior Latex	
<b>C</b>	Block Walls (interior)	SPEEDHIDE® Interior/Exterior Masonry Latex Block Filler	SPEEDHIDE® Pro-EV Zero Interior Latex	
<b>D</b>	Block Walls (exterior)	SPEEDHIDE® Interior/Exterior Masonry Latex Block Filler	SUN PROOF® Exterior Latex	
<b>E</b>	Trim /Doors /Door Frames	SEAL GRIP® Interior/Exterior Universal Primer/Sealer	SPEEDHIDE® Zero Interior Latex <b>OR</b> SPEEDHIDE® Pro-EV Zero Interior Latex <b>OR</b> BREAK-THROUGH!® 50 Interior/Exterior WB Acrylic	
<b>F</b>	Concrete Floor	Light Duty	BREAK-THROUGH!® 50 Interior/Exterior WB Acrylic <b>OR</b> PERMA-CRETE® COLOR SEAL™ WB Interior/Exterior Concrete Stain	
		Moderate Duty	AQUAPON® WB EP Primer	AQUAPON® WB EP Epoxy
		Heavy Industrial Vehicular Duty	PPG Flooring FLR 900	PPG Flooring FLR 600
<b>G</b>	Exterior Steel (wrought iron)	PITT-TECH® PLUS 4020 PF	PITT-TECH® PLUS Interior/Exterior DTM Industrial Enamel <b>OR</b> BREAK-THROUGH!® 50 Interior/Exterior WB Acrylic	
<b>H</b>	Exterior Aluminum	PITT-TECH® PLUS 4020 PF	PITT-TECH® PLUS Interior/Exterior DTM Industrial Enamel	
<b>I</b>	Exterior Wood Siding & Trim	SEAL GRIP® Interior/Exterior Universal Primer/Sealer <b>OR</b> ACRI-SHIELD® MAX Exterior Latex Bonding Primer	ACRI-SHIELD® MAX Exterior Latex <b>OR</b> SUN PROOF® Exterior Latex <b>OR</b> PPG ADVANTAGE™ 900 Interior/Exterior	
<b>J</b>	Exterior EFIS (Decorative)	SEAL GRIP® Interior/Exterior Universal Primer/Sealer	SUN PROOF® Exterior Latex <b>OR</b> SPEEDHIDE® Exterior Latex	
<b>K</b>	Exterior Stucco Exterior Stucco or Hardy Board	SEAL GRIP® Interior/Exterior Universal Primer/Sealer	ACRI-SHIELD® MAX Exterior Latex <b>OR</b> SUN PROOF® Exterior Latex <b>OR</b> SPEEDHIDE® Exterior Latex	




# Senior Living

Today, facilities and residents are seeking ways to customize and define their spaces to bring a sense of individuality within the Senior Living environment. There is an extensive use of color theory within Senior Living communities to create relaxing, soothing spaces for residents and to highlight appearance, cleanliness, services and amenities.



## Top 5 PPG Interior Colors - Senior Living

<b>COPENHAGEN</b> PPG1137-4
<b>GRAY FROST</b> PPG1012-4
<b>HEARTH</b> PPG1093-3
<b>GRACEFUL</b> PPG1152-3
<b>YUCCA</b> PPG1143-5



Application		Featured Products		
		Primer	Intermediate Coat	Topcoat
<b>A</b>	Resident Room Drywall	SPEEDHIDE® Zero Interior Latex Sealer	SPEEDHIDE® Zero Interior Latex	
<b>B</b>	Resident Bathrooms Drywall	SEAL GRIP® Interior/Exterior Universal Primer/Sealer	PITT-GLAZE® WB1 Interior Pre-Catalyzed Water-Borne Acrylic Epoxy <b>OR</b> AQUAPON® WB EP Epoxy	
<b>C</b>	Block Walls	SPEEDHIDE® Interior/Exterior Masonry Latex Block Filler	SPEEDHIDE® Zero Interior Latex <b>OR</b> PITT-GLAZE® WB1 Interior Pre-Catalyzed Water-Borne Acrylic Epoxy	
<b>D</b>	Trim /Doors /Door Frames	SEAL GRIP® Interior/Exterior Universal Primer/Sealer	BREAK-THROUGH!® 50 Interior/Exterior WB Acrylic <b>OR</b> PITT-GLAZE® WB1 Interior Pre-Catalyzed Water-Borne Acrylic Epoxy	
<b>E</b>	Concrete Floor	Light Duty	BREAK-THROUGH!® 50 Interior/Exterior WB Acrylic	
		Moderate Duty	AQUAPON® WB EP Epoxy	
		Heavy Industrial Vehicular Duty	PPG Flooring FLR 900	PPG Flooring FLR 600
<b>F</b>	Exterior Block Walls	SPEEDHIDE® Interior/Exterior Masonry Latex Block Filler	PERMA-CRETE® Interior/Exterior High Build 100% Acrylic Topcoat <b>OR</b> PPG PERMANIZER® Exterior Acrylic Latex	
<b>G</b>	Exterior Steel	PITT-TECH® PLUS 4020 PF	PITT-TECH® PLUS Interior/Exterior DTM Industrial Enamel <b>OR</b> BREAK-THROUGH!® 50 Interior/Exterior WB Acrylic	
<b>H</b>	Exterior Aluminum	PITT-TECH® PLUS 4020 PF	PITT-TECH® PLUS Interior/Exterior DTM Industrial Enamel	
<b>I</b>	Exterior Wood Siding & Trim	SEAL GRIP® Interior/Exterior Universal Primer/Sealer	PPG PERMANIZER® Exterior Acrylic Latex <b>OR</b> PPG ADVANTAGE™ 900 Interior/Exterior <b>OR</b> SUN PROOF® Exterior Latex	
<b>J</b>	Exterior EFIS	SEAL GRIP® Interior/Exterior Universal Primer/Sealer	SPEEDHIDE® Exterior Latex <b>OR</b> ACRI-SHIELD® MAX Exterior Latex	





[ppgpaints.com](https://ppgpaints.com)

PPG ARCHITECTURAL COATINGS | 400 BERTHA LAMME DRIVE | CRANBERRY TWP., PA 16066

*The PPG Logo, We protect and beautify the world, and Break-Through! are registered trademarks and PPG Paints is a trademark of PPG Industries Ohio, Inc. Speedhide, Seal Grip, Pitt Glaze, Aquapon, Permanizer, Pitt-Tech, Acri-Shield, Perma-Crete, and Sun Proof are registered trademarks and The Trusted Partner of the Pro Painter, PPG Voice of Colour, PPG Advantage, and Color Seal are trademarks of PPG Architectural Finishes, Inc. Previews is a registered trademark of Akzo Nobel. Ecovadis is a registered trademark of Ecovadis. R&D is a registered trademark of Advantage Business Media LLC. All company names and third-party marks appearing in this brochure are property of their respective owners. © 2021 PPG Industries, Inc. All rights reserved.*